

The image features a background of light-colored marble with grey and blue veining. Centered on this background is the text "WELCOME TO SOCIAL AT SIX" in a thin, orange-brown, sans-serif font. The text is arranged in two lines: "WELCOME TO" on the top line and "SOCIAL AT SIX" on the bottom line.

WELCOME TO
SOCIAL AT SIX

1. INTRO
2. OCCUPANCY CHART
3. SOCIAL FLOOR PLAN
4. HOSOI FLOOR PLAN
5. SUS FLOOR PLAN



The most diverse Meetings and Events space in Stockholm

Set in the heart of Stockholm, just moments away from the business district, At Six is a modern, luxury hotel with a vast variety of meeting and event spaces to suit all your needs. At hotel At Six, we pride ourselves in helping you create and tailor your event. Whether it is an intimate board meeting, a conference or a big festive gathering you can be sure that our unique spaces, attentive staff and award-winning cuisine will meet your expectations. Our modern and flexible event area of 2800sqm features several meeting rooms in different sizes and styles, a 12x3m LED-screen for astounding presentations, a podcast studio and all technology you will ever need.

In addition to that we have other creative spaces ideal for informal gatherings such as our music lounge HOSOI and our rooftop boxes MOLNET and THE GARDEN.

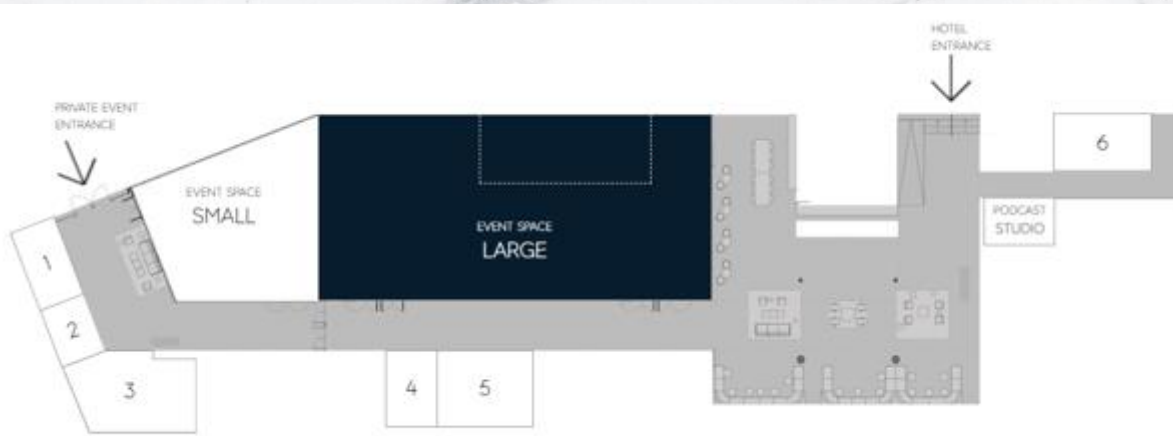
Finally, 343 hotel rooms of modern luxury are not more than an elevator ride away.

OCCUPANCY CHART

		1	2	3	4	5	6	7			1	2	3	4	5	6	7
Event Large	421m ²	300	200	120	72	120	200	450	Studio 7	30 m ²	—	—	12	—	—	—	—
Event Small	139m ²	120	80	40	22	60	100	180	Studio 8	72 m ²	54	30	26	24	26	40	—
Studio 1	21 m ²	—	—	10	—	—	—	—	Studio 9	95 m ²	72	42	32	30	32	50	—
Studio 2	22 m ²	—	—	8	—	—	—	—	Chambre Sèparèe	23 m ²	—	—	20	—	—	—	—
Studio 3	56 m ²	44	20	18	16	18	30	—	Podcast studio	18 m ²	—	—	8	—	—	—	—
Studio 4	23 m ²	—	—	12	—	—	—	—	Hosoi	80 m ²	—	—	—	—	35	—	70
Studio 5	44 m ²	—	—	10	—	—	—	—	Molnet	81 m ²	50	—	—	—	40	—	70
Studio 6	35 m ²	—	—	14	—	—	—	—	The Garden	165 m ²	100	—	—	—	70	—	160

1 = Theater, 2 = Classroom, 3 = Boardroom, 4 = U-shape, 5 = Cabaret, 6 = Round tables, 7 = Standing

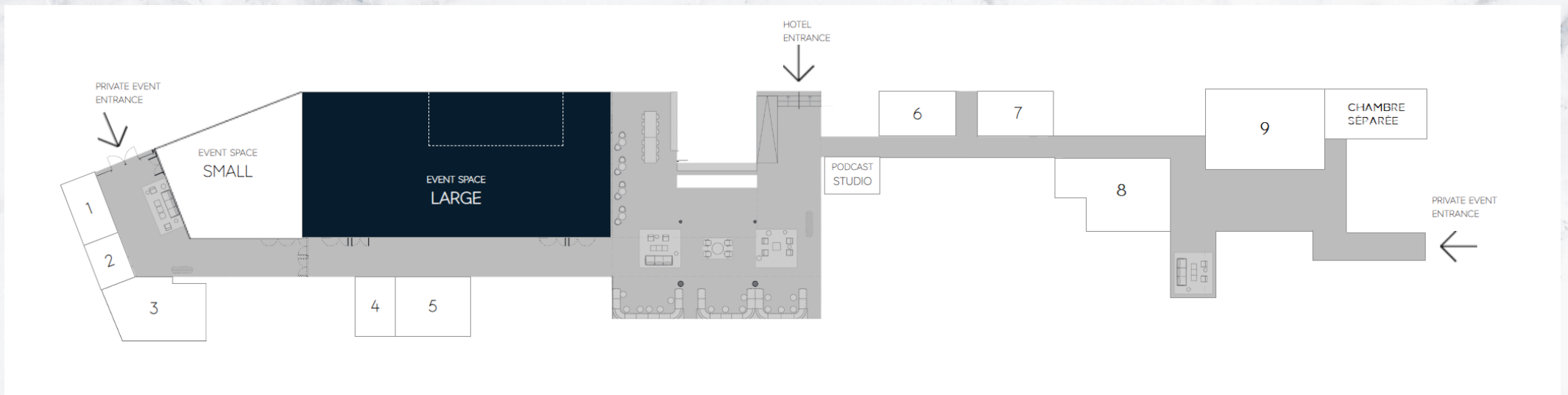
FLOOR PLAN SOCIAL 1



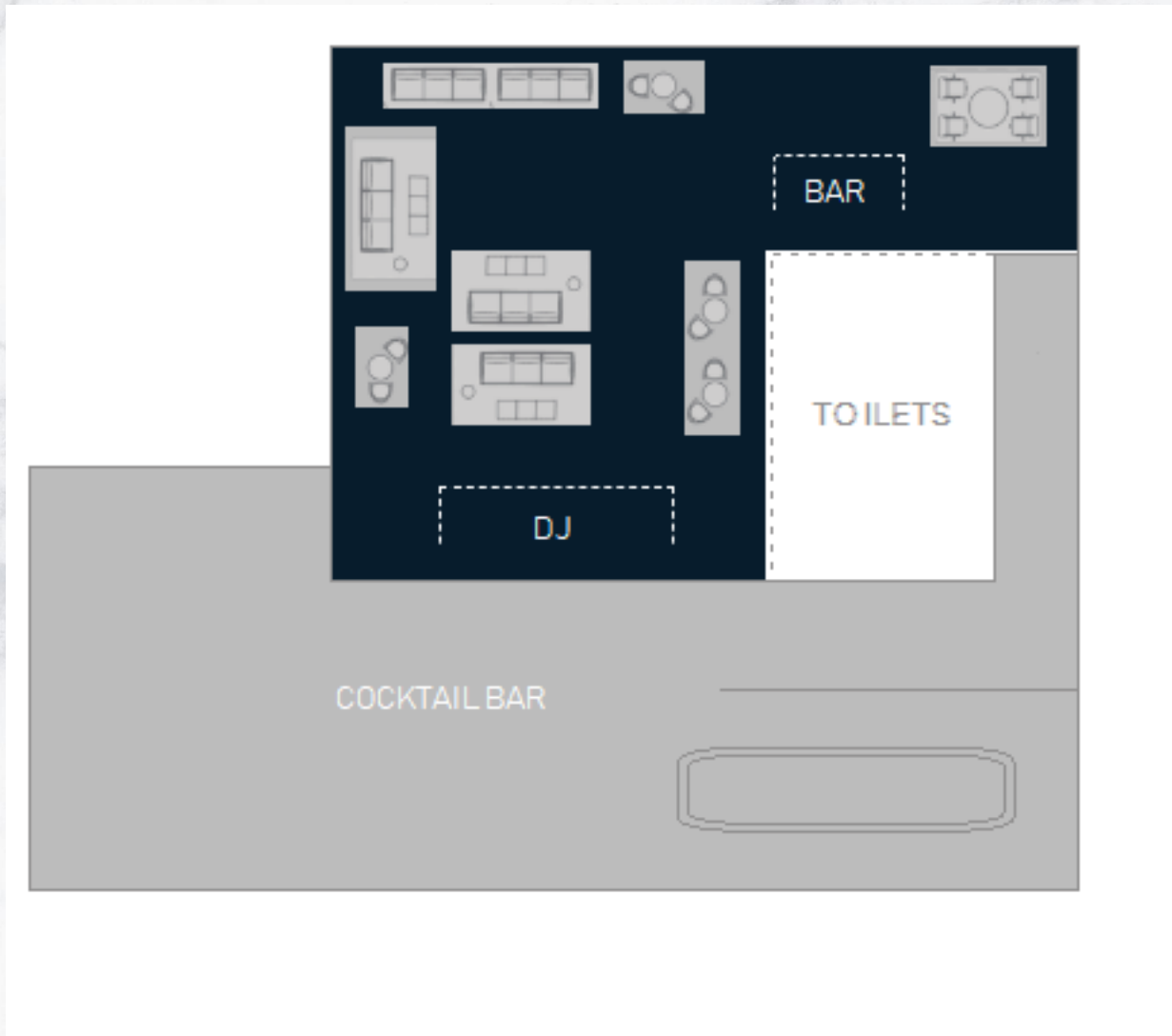
FLOOR PLAN SOCIAL 2



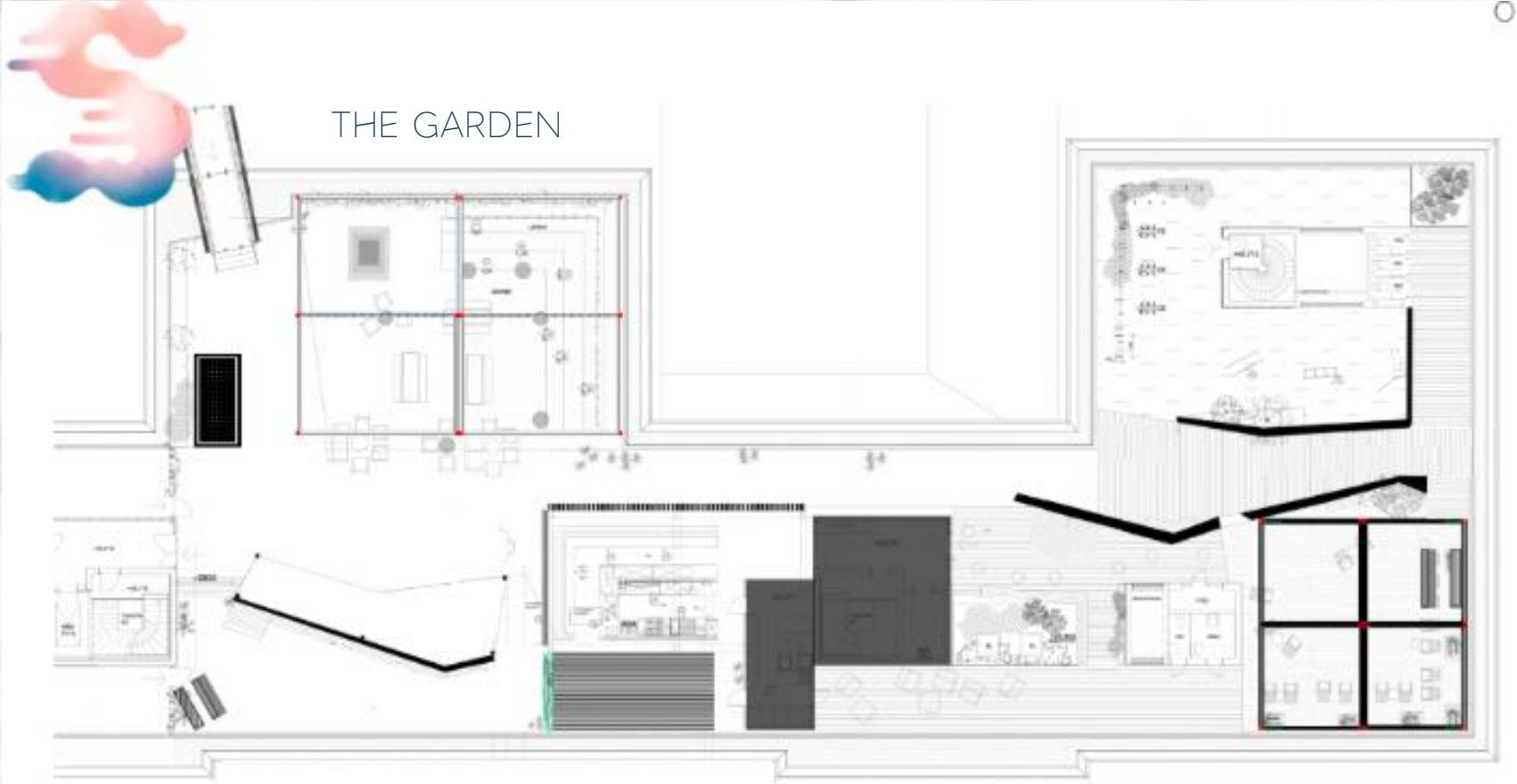
FLOOR PLAN COMBINED



HOSOI FLOOR PLAN



SUS FLOOR PLAN



MOLNET